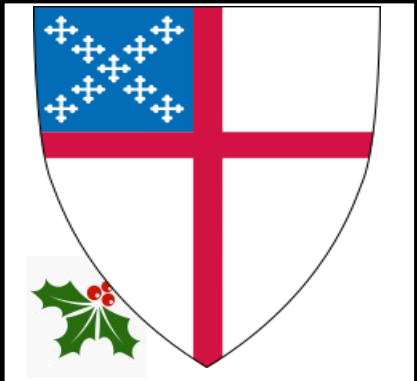




# *The Chapel Chimes*



***Inside This Issue:***

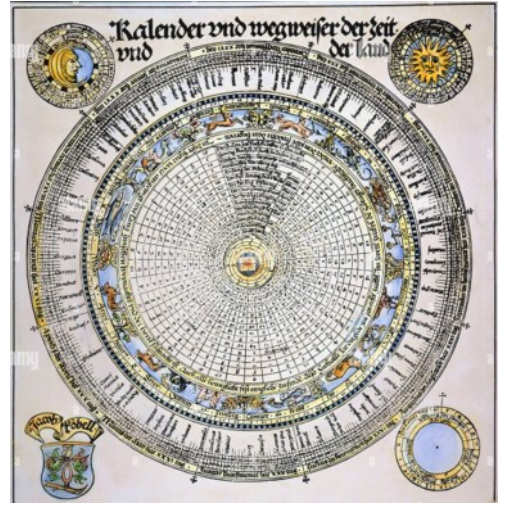
From the Rector's Desk	1-2
Christmas Services	3
ECW/ Stewardship	4
Public Relations committee	5
Treasurer's Desk & More	6
Order of St. Luke	7
Birthdays/ Altar Guild	8
Message Board	9
Events / Operation Christmas Child	10
Laughter is good for the Soul	11
Calendar	12
Parish Staff & Help Hotlines	13
Local Advertisements	14-15
Mark your Calendar	16

*From the Rector's Desk...*

 ***Happy New Year!*** 

I bet I know what you're thinking right now. "Fr. Paul has finally fallen off his rocker. He thinks it's January! Poor Fr. Paul." But that is not the case. I'm wishing you a happy Christian New Year. We might go about our daily lives using the Gregorian Calendar that starts every January 1<sup>st</sup>. However, even if we didn't know it, we live our liturgical prayer lives according to the Christian Calendar which begins on the First Sunday of Advent. Whereas the Gregorian New Year starts on the same date but a different day each year; the Liturgical New Year starts on the same day but a different date each year. Each new year's date is determined by the date of Easter of the same year. You can find some helpful tables in our Book of Common Prayer found on pages 882-885.

We then go to pages 884-885, follow the chart to April 17, follow across that line all the way to the last column and find the date for Advent as November 27. That is the beginning of the Christian New Year for 2022. Based on what year you choose; Advent could begin anywhere between November 27 and December 3.



Using the same method, you can also find the dates for Ash Wednesday, Ascension Day, and Pentecost Sunday. Additionally, you can determine how many Sundays there will be during the Epiphany season (Between 4 and 9), and what Proper reading to begin on the Sunday after Trinity Sunday (proper #3 - #8).

*(Continued on next page)*



**The Chapel Chimes**

Is a publication of:

St. Stephens Episcopal Church

Our Church Office is Located

at:

180 Route 539

Whiting, NJ 08759-1238

Phone: (732) 350-2121 Fax: (732) 350-6000



There is one other difference between the Gregorian and Liturgical calendars. The Gregorian calendar is sub-divide into 12 nearly equal months, whereas the Liturgical calendar is divided into seven seasons which vary greatly in their lengths. As noted above some seasons can vary from 4 to 9 or 21- 27 weeks!

Let's look at a general listing of our Liturgical Seasons:

**Advent Season:** *Starts between 11/27 and 12/3 and lasts about 4 weeks until 12/25*

**Christmas Season:** *Starts 12/25 and lasts until 1/5*

**Epiphany Season:** *Starts on Epiphany 1/6 and lasts between 4 and 9 weeks until Shrove Tuesday*

**Lenten Season:** *Starts on Ash Wednesday and lasts about 6 weeks until Palm Sunday.*

**Holy Week:** *Starts on Palm Sunday and continues daily through Holy Saturday, 7 days.*

**Easter Season:** *Starts on Easter Eve, continues daily for a week and then each Sunday to Pentecost. (For a total of 7 weeks)*

**Season after Pentecost:** *Starts Trinity Sunday and continues for 21-27 weeks to the Last Sunday after Pentecost.*

Each of these seasons has a special focus on the life of Jesus, in our relationship to Him and to His instruction to the members of His Body, the Church.

Advent is a season of anticipation. We anticipate the coming of the baby Jesus in the manger. We also anticipate the return of Jesus to claim His Church at the end of the world.

Other seasons have different foci. But we will leave them to a later time. For now, let us "Keep looking up!" and pray for the return of Jesus to claim us all for life in His eternal Kingdom.

May we all grow throughout the seasons of this new Liturgical Year together,

The Rev. Paul Van Sant Sr. M. Div.,Th.M.



Editor..... Greg Mathews  
Contributors..... Fr. Paul Van Sant

Esther Graham

Stefanie Bodine

Gerrie Vergona

Susan Clarke

Bill Bodine

Valerie Thompson

Articles are welcome from all parish members.

Please submit signed and dated items in writing to

The Church Office or email us at,

ssechurch@gmail.com

The deadline for items,  
(First Monday of the month for the following month)

Any Questions, please feel free to contacts us

(732) 350-2121 ext 10

# Christmas Services

*Come, Celebrate with Praise for our Lord and Savior  
on this most blessed Christmas season*

*At*

*St Stephen's Episcopal Church  
180 Rt 539, Whiting, NJ 08759*

## CHRISTMAS EVE

*Saturday, December 24th at 4PM A Holy Eucharist service,  
(with a choral Nativity)*

*Holy Eucharist service at 7PM,  
9PM (accompanied by the sound of a guitar)*

## CHRISTMAS DAY

*Sunday, December 25th - 8AM & 10AM Holy Eucharist*

*Rejoice in the Lord, you righteous,  
and give thanks to his holy Name.*

*Psalms 97:12*

*Start your day with worship, singing or listening to one song or hymn or  
enjoying a short reading about joy or blessings each day!*

*Try some of these;*

*Angels from the Realms of Glory  
Angels We Have Heard on High  
Christ the Lord Is Risen Today  
Hark! The Herald Angels Sing  
Hymns of Joy (Chris Tomlin)  
I Could Sing of Your Love Forever  
Joyful, Joyful, We Adore Thee  
Joy to the World  
O Come, All Ye Faithful  
The King Shall Come*

## THE JOY OF CARING LIKE JESUS

Love your neighbor as yourself. Who is my neighbor? Jesus transforms our hearts so that we are willing to be neighbors to those who need our care. Soften our hearts so we feel compassion for those you love. Help us: with convenience, compassion, comfort, control, choice in all the ways we can care about others. We want to live every moment of our lives in Your presence, flowing with your Spirit, following your lead, sharing our time, energy, finance, connections, and goodwill with those who need it. You are where the joy is!



## ECW

Our next meeting will be on Thursday, December 1 at 1PM. All women are members of the ECW. Come help to plan for ECW events in 2023. Enjoy Christmas music, and refreshments provided by Stefanie.

ECW and the Men's Club enjoyed creating the Pasta and More Dinner which was delicious and it netted \$1326. They will be again working on the Bluegrass and Barbeque Dinner was very successful and the net profit was \$1250. Another delicious event!

And a **BIG THANK YOU** to  
*Joanne Smithson*  
for coordinating another delightful Craft and Vendor Fair in October.  
The profit was \$600.

## DIOCESAN NEWS

On Sunday, December 11 after the 10AM service, a special meeting will elect the members of our congregation that will be the delegates and alternates for the Diocesan selection Committee for our next Bishop. Stefanie Bodine, Nominations Chair, is contacting members of the congregation to serve as representatives from our Parish to the Atlantic Convocation and alternates, to the Diocesan Convention and alternates, and three members of the Vestry, and the three members of the Finance Committee. Your help is needed.

## OUR STEWARDSHIP TEAM SAYS:

### "THANK YOU!!!"

We would like to express our sincere thanks from all of us on the St Stephen's Stewardship Team to everyone who volunteered to share stories, and for all who participated in the

program this year! And a huge thank you to Canon Phyllis Jones from the Diocese of NJ for her recent visit to our church, and for her steadfast support of our program! And of course, we always thank Father Paul for his leadership and support of both the Stewardship Program and our team! We certainly couldn't have succeeded without the support of you - our Parish Family, and all those mentioned.

Our Stewardship Thank You Luncheon is set for Sunday, December 18<sup>th</sup>, after the later service, in the coffee room. Our team will be on hand to personally thank everyone for their support, contributions, and participation. And we would greatly appreciate your comments in our Stewardship suggestion box! Please feel free to drop a card in our box in the Narthex. We will pass them along to Father Paul for the future.

Over the next few weeks and months, you will be hearing about a new Stewardship endeavor - Legacy & Will planning. We're planning a huge event for the Spring 2023, and we'll have much more to follow! Just wanted to pass on the big announcement!

*By William Bodine - Stewardship Chairman*

THANKS TO YOU - OUR PARISH FAMILY

PUBLIC RELATIONS IS BACK!!!!

Thank you to the many volunteers who stepped up to join the new Public Relations Committee! It's because of the combined effort of all of us that we have further increased community awareness for St Stephen's - Whiting, and that we have broadened the church's public image! Congratulations! There are simply too many to thank personally, but we wanted everyone to know how hard we work to press onward and upward with public relations and advertising! Because of our efforts, we are on the radio, online websites for tv coverage, newspapers, The Chimes, Facebook, The Patch, and much more! We now have Diocesan Communications as well!

All of this couldn't have been done if it weren't for the commitment and willingness of those who stepped up to do the work. Your efforts are greatly appreciated, and we continue to come up with great ideas to improve! Our audio/video coverage also continues to improve by adding additional webcams and tablet cameras to cover various angles in the church for Sunday Services.

We will continue to meet monthly after Services on a Sunday, and during the week if necessary. If you have a skill set or just want to get involved, join us at a meeting! Come up with ideas and suggestions to help our mission, which is to ensure the coverage of all St Stephen's - Whiting public events and functions thereby bringing in new families to our church! We need YOU! So come on and join us! We value you, and further appreciate your willingness to serve!

By William Bodine - PR Chairman

**CHRISTMAS AT THE QUIGLEY'S**

Mark your calendars!!

The annual St Stephens Christmas Party at the Quigley's will be on Friday December 16, 2022 beginning at 4 o'clock. Please sign up to attend at the church narthex or call the church at (732) 350-2121.

Address; 2001 Elizabeth Ave, whiting NJ 08759

**Please bring a Dozen cookies for a COOKIE EXCHANGE.  
And webring a gift for our GIFT EXCHANGE (\$20 value)**

# Memorial Garden For Pets

at

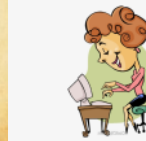
St. Stephen's Episcopal Church  
180 Rt 539, Whiting, NJ

For all who are looking for a special place to lay your beloved pets to rest.  
Please contact our office Monday–Thursday 9am–2pm for services and more information  
(732) 350-2121

## From the Treasurer's Desk

Watch for a new way of donating coming this month. This new capability will have lots of benefits such as: using a credit card, donating online, and others. It is easy, fast, and convenient. The company we will be using is also partnering with Church Windows, and will automatically post donations to your account, and provide reports to me. Greg and I have one or two little tweaks to have the process operating smoothly. Once that is in place, I will be distributing instructions and will be ready to help you get started. We're very excited to be able to provide you with this option and hope you will be excited to use it!

Gerrie Vergona– Treasurer



## ADVENT BIBLE STUDY

will be led by Fr. Paul on Tuesdays, November 29, and December 6, 13 and 20<sup>th</sup> at 11AM. Mark it on your calendar and join us.

## CHRISTMAS EVE

Services will be held at 4PM - Choral Nativity, 7PM, 9PM with guitar. Join us to welcome baby Jesus. Holy Eucharist.

## CHRISTMAS DAY

Service will be at 8 AM, 10AM with Holy Eucharist. Join us online on YouTube at:  
<https://www.youtube.com/channel/UCI4jQX1csLUaDXZWZ44BSEQ/featured>

## Our Daily Bread Pantry and Hungry Paws

Days and Hours of Operation are:

Tuesday 10 AM until 12:00 PM

Wednesday 10 AM until 12:00 PM

*Our Daily Bread Pantry and Hungry Paws* is made up of members of the **St. Stephen's Episcopal Church** community and other volunteers who assist in maintaining our pantry, provide food for the sick, the hungry and the needy. The food pantry is here to help those who have minimal funds to work with and come to us when they have a specific need for food. The *Our Daily Bread Pantry and Hungry Paws* through very generous donations is also able to provide pet food for dogs and cats. For further information please call **Jim Jados, Director, Food Pantry** at (732) 408-5948.



# OSL

A MINISTRY OF  
CHRISTIAN HEALING

## ORDER OF ST. LUKE

We were honored to have The Rev. Josh Acton, the North American Director of OSL to conduct the healing service with Fr. Paul. Thirty-eight people, some OSL members, from Christ Church, Tom's River, St. Stephen's, Waretown, and our church participated in the service, in prayers of healing, further talk/discussion, and lunch. The lunch was provided by members of the three churches. Thanks also to Susan Clarke who helped with the tech from church; Bob Virtue and Marie Piccolo from the choir, took care of the set up and clean up of the food.

## DO YOU NEED PRAYERS FOR HEALING?

Your prayers have been included in our Compline prayer list. Contact Fr. Paul. Susan Clarke, or Stefanie at (732) 350-2904 or [houseofpink7@gmail.com](mailto:houseofpink7@gmail.com) if you have any questions or need prayers.

## PRAYER OF THE ORDER OF ST. LUKE THE PHYSICIAN

Almighty God, who inspired Luke the Physician to set forth in the Gospel the love and healing power of Your son: Graciously continue in Your Church the love and power to heal, to the praise and glory of Your Name, through Jesus Christ, Our Lord. *Amen*

## HEALING SERVICE

Join us every Thursday at 10AM for an uplifting experience prayers, communion, and healing.

Available on **You Tube** and **Zoom!**

## ST. STEPHEN'S PRAYER CHAIN

St. Stephen's is in need of additional members for our Prayer Chain. The Prayer Chain is a dedicated group of parishioners who will pray for any who are in need. If you are interested or would like further information, please contact Greta Pearl at 732-350-7584 for details. Greta is the contact when placing, on the Prayer Chain, your name or the names of family, neighbors, or friends who would like prayers for healing, comfort, or any other purpose.

## OSL - YOUR VOICE IS IMPORTANT

All voices and instruments are to inspire hope with the glorious music of Jesus' healing! It takes one, or more of us to pray for healing with Jesus. Joy longs to be shared! "If two of you agree to ask God for something in a symphony of prayer, my heavenly Father will do it for you. For wherever two or three come together in honor of my name, I am right there with them!" (Mt 18:19-20, TPT)

Gracious God, we thank You for opening the windows of heaven and showering us with blessings of joy, wholeness, belonging, fresh hope and eager anticipation of the abundant harvest You are preparing for us.

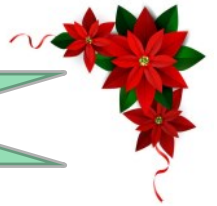
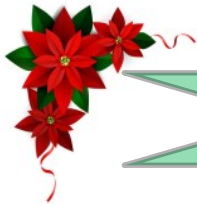
## CHRISTMAS FLOWER OFFERINGS

The Altar Guild is again planning to order Christmas flowers and wreaths to decorate the Sanctuary as we prepare for the Celebration of Our Savior's Birth. This is a time when we especially may want to remember our loved ones and friends who have died or to express thanksgiving for our blessings.

Christmas Flower Offering envelopes will be available in the Narthex for those who would like to participate. Please fill out the appropriate information, and return the envelope to the church at your earliest convenience. If you are unable to get to church at this time, you may mail your donation and memorial information to the Church to the attention of Valerie Thompson, Altar Guild Flower Chair. The deadline for submission of Christmas Flower Offerings is Sunday, December 18<sup>th</sup>.

If you have any questions, please don't hesitate to call Altar Guild Flower Chair Valerie Thompson, at 732-657-4510.

Thank you and God Bless.



*Happy Birthday!*

### December

<i>Claire Wolpert</i>	<i>12/06</i>
<i>Ricki Minix</i>	<i>12/06</i>
<i>Kelsey Collins</i>	<i>12/08</i>
<i>Riley Woods</i>	<i>12/11</i>
<i>William Conover</i>	<i>12/16</i>
<i>Andrew Van Sant</i>	<i>12/19</i>
<i>Carolsue Cummings</i>	<i>12/21</i>
<i>Dolores Ropes</i>	<i>12/23</i>
<i>Johann Soriano</i>	<i>12/25</i>
<i>Kenneth Portz</i>	<i>12/30</i>
<i>Ryan Woods</i>	<i>12/30</i>

### January

<i>Therese Heon</i>	<i>01/03</i>
<i>Jennifer Quigley</i>	<i>01/05</i>
<i>Rose Emo</i>	<i>01/06</i>
<i>June Bruen</i>	<i>01/05</i>
<i>Mackenzie Collins</i>	<i>01/08</i>
<i>Dottie Intrieri</i>	<i>01/08</i>
<i>Emily Stahl</i>	<i>01/08</i>
<i>Maryann Payne</i>	<i>01/10</i>
<i>Peter Quigley</i>	<i>01/11</i>
<i>Winter Bradley</i>	<i>01/12</i>
<i>Greta Pearl</i>	<i>01/13</i>
<i>Megan Costigliola</i>	<i>01/15</i>
<i>Grayson Bradley</i>	<i>01/18</i>
<i>Abelardo Gonzalez</i>	<i>01/19</i>
<i>Terry Rutkowski</i>	<i>01/20</i>
<i>James Ridge</i>	<i>01/21</i>
<i>Lara Dey</i>	<i>01/23</i>
<i>Daniel Lee</i>	<i>01/23</i>
<i>Shelagh Bluni</i>	<i>01/24</i>
<i>Jane Schaut</i>	<i>01/24</i>
<i>Irv Neuman</i>	<i>01/25</i>
<i>Thomas Larson</i>	<i>01/29</i>
<i>Ruthann Brooks</i>	<i>01/31</i>



# MESSAGE BOARD

## TREE LIGHTING

will be held on Thursday, December 8 beginning at 4:30 with a carol sing along. Grants will be awarded to two or more local non-profit groups that support community needs. Refreshments will be served. The tree lighting and singing of "Silent Night" will conclude the event. Organized by the Whiting Business Association. All are invited.

## WHITING GARDEN CLUB

will meet on Wednesday, December 7 at 10AM. This month is a brunch, call Chris at (732) 849-9316 to share what dish you will bring. There is no meeting in January.

## ONLINE CHURCH SERVICES

Compline is available at 7PM every Monday, Wednesday, and Friday. Holy Eucharist is held every Sunday at 8AM and 10:15AM on zoom and you tube as well. All are welcome! COME AND SEE!!!

## THYROID SUPPORT GROUP

will meet on Monday, December 12 at 10AM. Come and share with us, learn more information about thyroids. If you have any questions, contact the facilitator, Stefanie at (732) 350-2904.



Host one after the 8AM or 10:15AM Service. Everyone enjoys chatting, visiting and a delicious item with their coffee or tea. See Stefanie Bodine with your questions.

## PINELANDS SYMPHONIC BAND BROUGHT

joy and holiday zest as well as a variety of music to open our holiday season. Thank you to these wonderful musicians for sharing their God given talents.

## ADVENT BIBLE STUDY

will be led by Fr. Paul on Tuesdays, November 29, and December 6, 13 and 20<sup>th</sup> at 11AM. Mark it on your calendar and join us.

## CHRISTMAS EVE

Services will be held at 4PM - Choral Nativity, 7PM 9PM with guitar. Join us to welcome baby Jesus. Holy Eucharist.

## CHRISTMAS DAY

Service will be at 10AM with Holy Eucharist. Join us online on YouTube at: <https://www.youtube.com/channel/UC14jQX1csLUaDXZWZ44BSEQ/featured>

St. Stephen's  
Episcopal Church  
180 Route 539,  
Whiting, NJ

Weekly

ADVENT BIBLE

Study

EVERY TUESDAY | 11:00 AM - 12:00 PM

4 Weeks: November 29, December 6, 13 & 20.

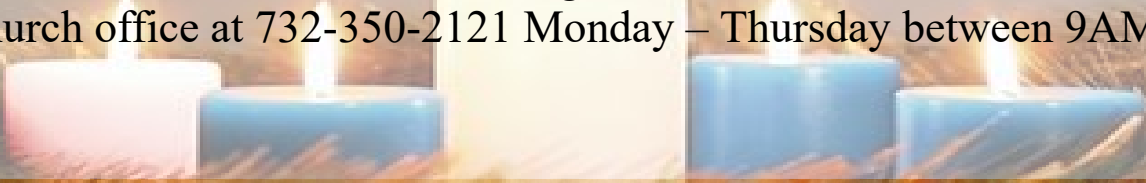
No cost.

WITH: RECTOR, PAUL A. VANSANT

# ADVENT BIBLE STUDY

## Four Weeks of Advent Study

St. Stephen's Episcopal Church will host four weeks of Advent Bible Study led by Rector, Paul A. Van Sant on the following Tuesdays: November 29, December 6, 13 & 20. All sessions will be from 11:00 AM – 12:00 noon. Open your minds and hearts to the hope, peace, love and joy of the season. The cost is only your time. Church address is 180 Route 539, Whiting, NJ. For more information or directions call the church office at 732-350-2121 Monday – Thursday between 9AM – 2PM.



## Operation Christmas Child

*We are the hope and love that a child in need  
is counting on at Christmas*

*By Barbara Marshall*



As a child I remember how special Christmas was to me and my four sisters. My parents lived very modestly, and I never realized that we were just making ends meet. We enjoyed celebrating the birth of Christ and the many Christmas activities and, of course--- Christmas presents. Later in life I found out that my mother put away money all year long to give us a numerous Christmas presents.

We would all meet in the hall and go into the living room together. None of our presents were wrapped, and it was such a thrill for us to see five piles of presents. Each of us had a “wow” gift such as a bike, peddle car, doll & carriage, radio, etc. Then the other games, crafts, books, etc. were piled one on another and looked like a tower—it felt magical to us. I'm sure many of you have had a similar experience or made sure that your children's Christmas was memorable.

I was humbled by the thought of children that have so many basic needs that would never expect something as simple as a gift. With that thought, my face got hot and I felt embarrassed.

I had so much compared to them and that I wasn't doing more to help. I immediately took a shoebox and filled it with the suggested gifts. It was such a simple thing that would give a child hope and love. St. Stephen's Episcopal Church has been supporting Operation Christmas Child for years. I am so impressed with the program that I am Chairing it this year. Not only do our parishioners participate, but our neighbors at the Verge are avid supporters.

Operation Christmas Child is a project of Samaritan's Purse, an international relief organization. Shoebox gifts demonstrate God's love in a tangible way to children in need around the world. Their mission is to provide local partners around the world with shoeboxes filled with small toys, hygiene items, and school supplies. By partnering with the local church worldwide, each shoebox gift is a powerful tool for sharing the Good News of Jesus Christ.

We ship these simple gifts outside the United States to children affected by war, poverty, natural disaster, famine, and disease; and to children living on Native American reservations in the U.S. For many children, this is the first gift they will ever receive. Children do not have to do or say anything to receive the gift. They deliver hope and joy to children all around the world, regardless of their faith or religious background.

Next year I hope that you join us in this important mission. For information or to get on the list to be contacted next year for a shoebox call Barbara Marshall 732-778-2628.



# Laughter is good for the Soul



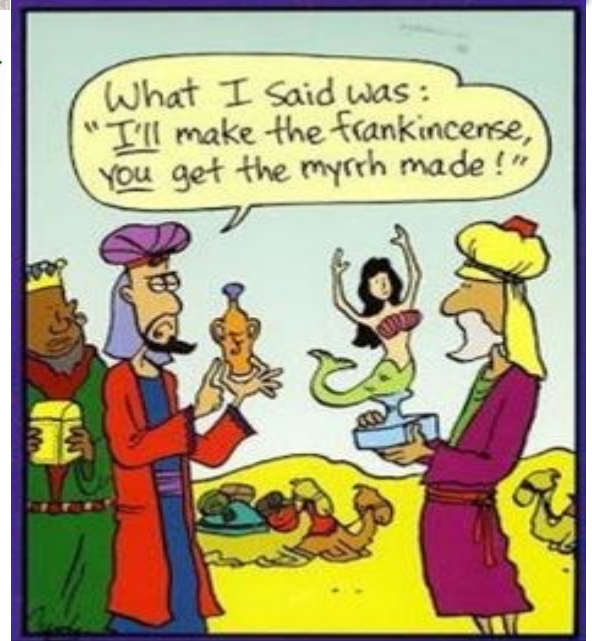
**YOU ARE THE**  
 Happy to my holiday  
 Jingle in my bells  
**NUT TO MY CRACKER**  
 Fruit to my Cake  
 PRESENT UNDER MY TREE  
 Wish to my Star  
**HOME FOR MY HOLIDAY**  
 candy to my cane?  
 KISS UNDER THE MISTLETOE  
 holly to my jolly  
 WINTER TO MY WONDERLAND  
**GINGER TO MY BREAD**  
 Milk to my Cookie  
**JOY TO MY WORLD**  
 Star on my Tree  
**LOVE OF MY LIFE**



## ADVENT

E B U Y S X A J N D S Z K L J B K  
 M A S S E L D N A C I G K O D F A  
 B C U M E B T I C P P Y T V I G K  
 U F Y F K E T I H W J R A E S I M  
 S P U R P L E X X H M A R T C A G  
 P N A T I V I T Y A Z M X R V P S  
 G I F T S P N R X W G T P I N K G  
 X P T G S D Z S O I W U L J B G Y  
 R G N K Q P Y U O S W L O O E C Q  
 C Q E G C Y G S L E R G A Y T E J  
 L E V U E O H E F M E P O H H L O  
 U Y D Z R A W J B E A A H S L E S  
 Q H A M A P C Y N N T S A U E B E  
 C B Z M P N F B U T H W U S H R P  
 S I B K E O W A Z Z Z N Z E E A H  
 C S B F R A W B F A I T H J M T Y  
 P E F P P D A D F R V K V H Z E P

- |           |         |          |           |
|-----------|---------|----------|-----------|
| GIFTS     | WISEMEN | NATIVITY | JOY       |
| CELEBRATE | PINK    | WHITE    | BABYJESUS |
| BETHLEHEM | JOSEPH  | MARY     | FAITH     |
| HOPE      | LOVE    | JESUS    | CANDLES   |
| PURPLE    | WREATH  | PREPARE  | ADVENT    |



# DECEMBER

Shutterstock.com · 321936737



Sum	Mon	Tue	Wed	Thu	Fri	Sat
				1 Healing Service 10am ECW meeting 1PM AA Meeting 3pm	2 Pinelands Symphonic band practice 9am AA Friday Nighters 7-8pm	3 AA Meeting 8pm
4 Holy Eucharist 8&10:15AM	5 Woman's Bible study Group 11am AA group 3pm	6 ADVENT BIBLE STUDY 11am Closed AA Meeting 2pm Boy Scouts, 7:30 - 8:30pm	7 Choir practice 10am AA Meeting 3pm	8 Healing Service 10am & OSJ meeting after service AA Meeting 3pm TREE LIGHTING 4:30pm	9 Pinelands Symphonic band practice 9am AA Friday Nighters 7-8pm	10 AA Meeting 8pm
11 Holy Eucharist 8&10:15AM	12 Thyroid Support Group 10am Woman's Bible study Group 11am AA group 3pm	13 ADVENT BIBLE STUDY 11am Closed AA Meeting 2pm Boy Scouts, 7:30 - 8:30pm	14 Choir practice 10am AA Meeting 3pm Daughters of the British Empire 6PM-9PM	15 Healing Service 10am AA Meeting 3pm	16 Pinelands Symphonic band practice 9am AA Friday Nighters 7-8pm	17 AA Meeting 8pm
18 Holy Eucharist 8&10:15AM	19 Vestry Meeting 10am Woman's Bible Study Group 11am AA group 3pm	20 ADVENT BIBLE STUDY 11am Closed AA Meeting 2pm Boy Scouts, 7:30 - 8:30pm	21 Choir practice 10am AA Meeting 3pm	22 Healing Service 10am AA Meeting 3pm	23 Pinelands Symphonic band practice 9am AA Friday Nighters 7-8pm	24 <b>CHRISTMAS EVE</b> Services will be held at 4PM - Choral Nativity, 7PM / 9PM with guitar. Join us to welcome baby Jesus. Holy Eucharist.
25 <b>Christmas Day</b> Merry Christmas Holy Eucharist 8&10:15AM	26 Group 11am AA group 3pm Church is closed	27 Closed AA Meeting 2pm Boy Scouts, 7:30 - 8:30pm Church is closed	28 AA Meeting 3pm Church is closed	29 AA Meeting 3pm Church is closed	30 AA Friday Nighters 7-8pm Church is closed	31 AA Meeting 8pm Have a Happy New Year!

## Parish Staff

### **Bishop & Chief Pastor**

The Rt. Rev. William H. Stokes

### **Rector**

The Rev. Paul A. Van Sant, Sr., M. Div., Th. M.

### **Music Minister**

Esther Graham

### **Treasurer**

Gerrie Vergona

### **Assistant Treasurer**

Suzan Webb

### **Rector's Warden**

Stefanie Bodine ('23)

### **Property Warden**

Richard Smithson ('22)

### **Clerk of the Vestry**

JoAnn Smithson

### **Vestry Members:**

#### **Class of 2023**

*Kay Karlick*

*Tom Larson*

*Ken Seda*

#### **Class of 2024**

*Debbie Fisher*

*Marge Pamykala*

*Johanne Soriano*

#### **Class of 2025**

*Dottie Kaster*

*Mary Ann Payne*

*Robert Virtue*

#### **Office Staff:**

**Parish Administrator**

*Greg Mathews*

**Sexton**

*Tom O'Brien*



## Help Hotline Contact Information

As many of us face challenges with today's unstable economy, here are some helpful telephone numbers for assistance. Pass them along if you know someone who needs a little extra help getting through these tough times.

### Heating & Weatherization

O.C.E.A.N. Inc. 732-244-5333 (heating)

732-244-5396 (weatherization)

[www.oceaninc.org](http://www.oceaninc.org)

NJ Shares 866-657-4273

[www.njshares.org](http://www.njshares.org)

### Mortgage Assistance

Hope Hotline 888-995-HOPE

[www.hopenow.com](http://www.hopenow.com)

### Health Insurance, Food Stamps, Utilities

NJ Family Care 800-701-0710

[www.njfamilycare.org](http://www.njfamilycare.org)

OC board of Social Services 732-349-1500

Verizon NJ Communications Lifeline

888-337-3339

Ocean County Government Resource Center

732-3708854

[www.ocean.nj.us/socialservices](http://www.ocean.nj.us/socialservices)

Ocean County Food Bank 732-918-2600

[www.foodbankmoc.org](http://www.foodbankmoc.org)

Angel Food Ministries 732-240-7543

Pick-up Location Christ Episcopal Church

1415 Washington St. Toms River

[www.angelfoodministries.com](http://www.angelfoodministries.com)

### Other Important Numbers

Social Security 800-772-1213

[www.socialsecurity.gov](http://www.socialsecurity.gov)

NJ Unemployment Insurance 732-761-2020

[www.state.nj.us](http://www.state.nj.us)



### CONCIERGE SERVICES

- Coordination of home maintenance & minor repairs
- Garage cleaning & removal of furniture & household items
- Food shopping, house cleaning, simple meal preparation
- Dog walking & pet maintenance
- Transportation
- Companion services – including night or week ends

**AFFORDABLE PRICES & EXCELLENT STAFF**

Call Ken Seda, proprietor, at (732) 731-9597 for a free estimate.



Margie Carney  
business owner



67 Lacey Rd unit 3  
Whiting, NJ 08759

732-849-3375  
thesaltyspa@gmail.com

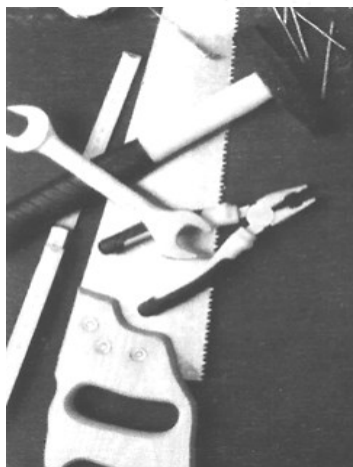
Mary Ruggiero  
Assistant Vice President  
Branch Manager  
NMLS# 1134253

Whiting Branch  
451 Lacey Road  
Whiting, NJ 08759  
t 732.350.6644  
f 732.350.2658  
maruggiero@investorsbank.com

www.thesaltyspa.com

investorsbank.com

SUPPORT  
SMALL  
Business



**Handyman Services**  
Carpentry, Masonry, and more

John M Garofalo III  
609-709-9391  
Free Estimates

# 2B Handy

Home Improvement Specialists

(732) 664-9400

Rick and Mike

One call we do it all  
Fully insured

www.2bhandy.com  
Licensed NJ# 13VH06031100



# Advertisements



**iCare Medical, LLC**  
Mobile Medical Concierge

Dr. Kesha Walton, DNP, APN, FNP-BC  
Provider  
icaremedical.llc@gmail.com

P.O. Box 694  
Lakehurst, NJ 08733  
icare-medical.org

732-290-5480



**Anderson AND Campbell**  
FUNERAL HOMES



Richard C. Campana, Jr., C.F.S.P.  
Manager

115 Lacey Rd.  
Whiting, NJ 08759  
732-350-5700  
Fax 732-350-2415  
Cell 908-227-1194  
Richard.Campana@DignityMemorial.com  
NJ Lic. No. 4135



*Advent*



**AVON**

Beauty for a Purpose  
www.youravon.com/ntompson

Nancy Thompson  
Independent Sales Representative  
nancy7982@aol.com  
TOMS RIVER, NJ

**Home: 732-279-3337**

**Cell: 732-644-5402**

*We need advertisers for our news letter to defer the cost of postage and printing. We are offering a Business Card Ad for one year; that's Eleven issues on an inside page for only \$100.*

*(We publish one issue for July/August)*

*We make this special offer:*

*A full year in our newsletter PLUS, a full page ad in the Fair Book \$115.*

*A full year in our newsletter PLUS, a half page ad in the Fair Book \$110.*

*A full year in our newsletter PLUS, a quarter page*

*Ad in the Fair Book \$105.*



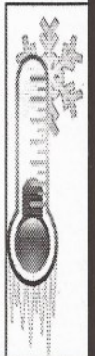
**AGS LLC**

**Offering Affordable**

**HVAC/Refrigeration Services**

Call Tony at 848. 525. 9577

**Master HVAC License # 9033**



**WHITING AUTO CENTER**

**PHONE: 732-765-ALEX (2539)**



300 Dover Rd  
S. Toms River, NJ  
08757



*St Stephens Episcopal Church*

*180 Route 539 Whiting, NJ 08759*

*732-350-2121*

NONPROFIT ORG.

U.S. POSTAGE

PAID

Toms River, NJ

PERMIT NO. 266



*Have a very Merry Christmas,  
and a  
Happy New Year, from our Parish  
to you!*

### DECEMBER CALENDAR

**Thursday, December 1, 8, 15, 22** - \*10AM - Healing Service

**Thursday, December 1** - 1PM - ECW Meeting

**Friday, December 2, 9, 16, 23, 30** - \*7PM - Compline

**Sunday, December 4** - after the 10AM service - Fellowship and Fundraising Committee planning meeting for 2023

**Sunday, December 4, 11, 18** - \*8AM, \*10:15AM - Holy Eucharist

**Monday, December 5, 12, 19, 26** - 11AM - Women's Bible Study, 7PM - Compline

**Tuesday, December 6, 13, 20** - \*11AM - Advent Bible Study

**Wednesday, December 7** - 10AM - Whiting Garden Club

**Wednesday, December 7, 14, 21, 28** - \*7PM - Compline

**Thursday, December 8** - after the \*Healing Service - OSL Meeting

**Thursday, December 8** - 4:30PM - Tree Lighting

**Sunday, December 11** - after the 10AM Service - Committee to be elected to represent our church at the meeting to select a Bishop in our Diocese

**Monday, December 12** - 10AM - Thyroid Support Group

**Monday, December 19** - 10AM - \*Vestry Meeting

**Saturday, December 24** - \*4PM (choral Nativity), \*7PM, \*9PM (guitar), Holy Eucharist

**Sunday, December 25** - \*8AM & 10AM \*Holy Eucharist

**CHURCH OFFICE CLOSED December 26-31**

\*All services and the Advent Bible study will also be on Zoom and You Tube for those that want to join [us--ststephenswhitingnj.org](https://us--ststephenswhitingnj.org) for you tube, and <https://us02web.zoom.us/j/7606773529?pwd=K1dra3FnblNMZC9NVXJMVmtGZG9NZz09> for zoom.